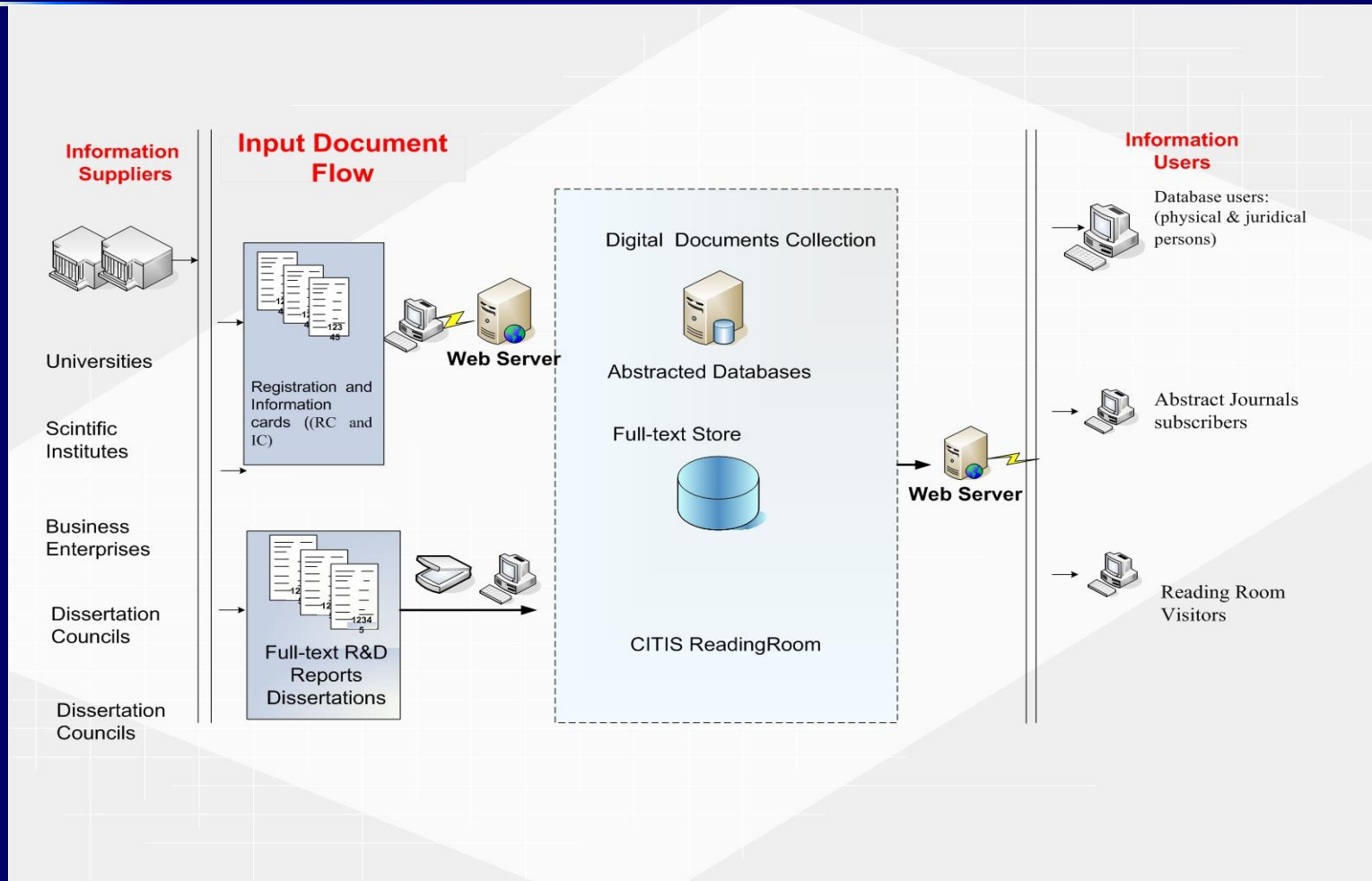


**Federal GL System Input Flow Analysis**  
**A.V. Starovoitov, Yu.M. Bogdanov, A.M. Bastrykin,**  
**A.I. Borzykh and L.P. Pavlov**



**CITIS**  
**Moscow, Russia**  
**2013**

# CITIS FEDERAL GREY LITERATURE SYSTEM



## **TWO TYPES OF INPUT DOCUMENTS:**

- PRIMARY DOCUMENTS (FULL-TEXT)  
R&D reports and dissertations
- SECONDARY DOCUMENTS (METADATA)  
Registration and information cards (RC & IC)

THE SIGNIFICANCE AND COMPLETENESS OF INPUT  
FLOW:

LEGAL DEPOSIT AND FEDERAL COVERAGE

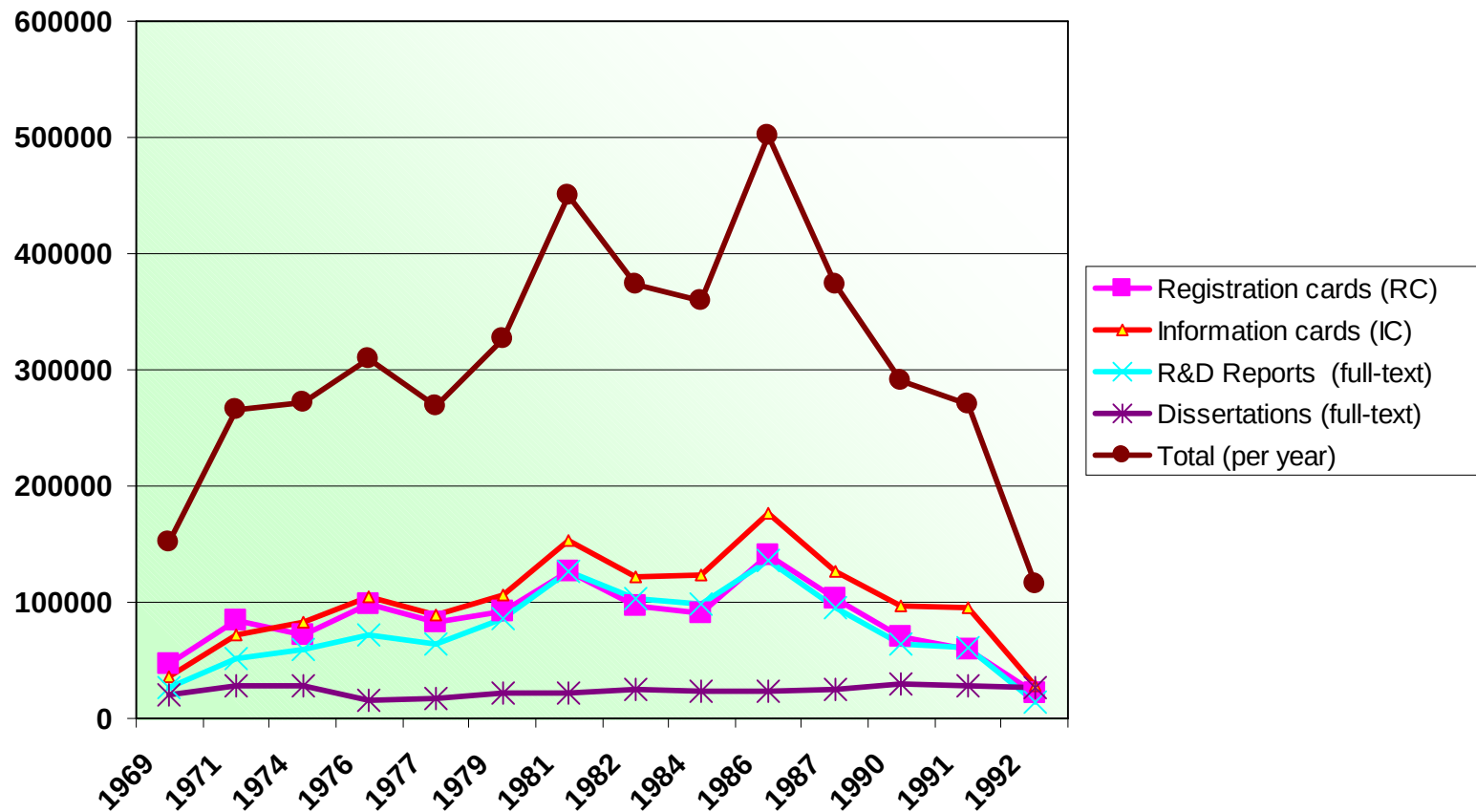
## **FACTORS OF INPUT FLOW DEPENDENCE :**

- **Seasonal**
- **Organizational**
- **Financial**
- **Legal and Disciplinary**

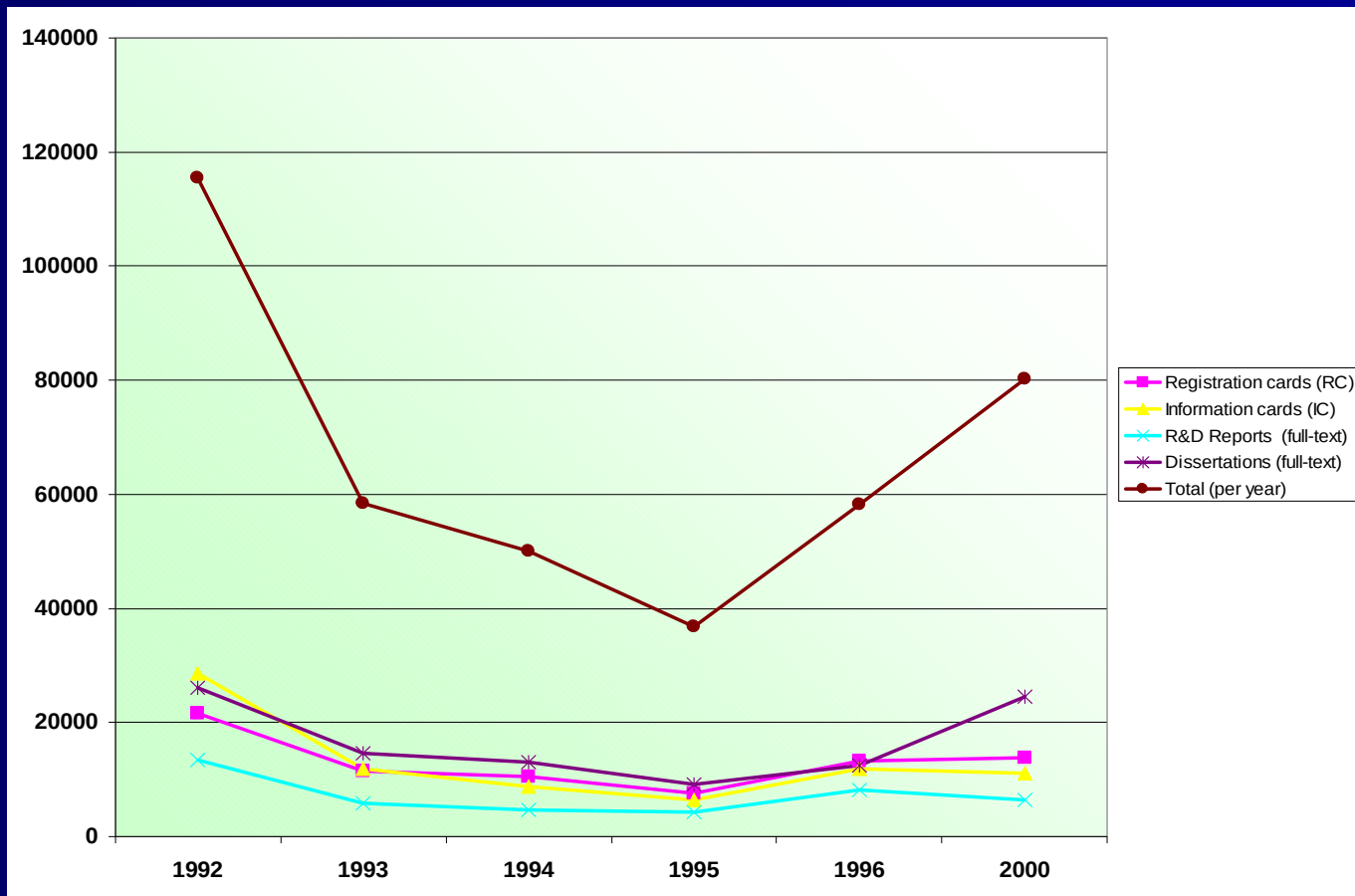
## **INPUT FLOW DIVISION INTO PERIODS :**

- **SOVIET PERIOD (1967 - 1991)**
- **TRANSITION PERIOD (1992 - 2000)**
- **MODERN PERIOD (2001 - 2012)**

**Table 1. Yearly document arrivals: Soviet period (1967 – 1991)**



**Table 2. Yearly document arrivals: Transition period  
(1992 – 2000)**



**Table 3. Yearly document arrivals: Modern period  
(2001 – 2012)**

