

***Tweet Comments
or Questions:***

@L_Vowell

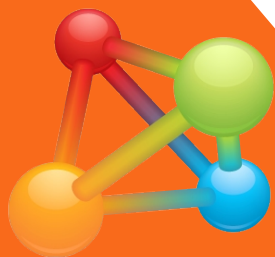
@LynnJD

#GL13ScienceForums

#GL13conf



Science-Forums.net
COMMUNITIES FOR SCIENCE COLLEAGUES



Lance Vowell
Program Manager
Contractor to DOE/OSTI
Information International
Associates (Ila)



Lynn Davis
Program Liaison, MLS
DOE Office of Scientific and
Technical Information (OSTI)

Motivation/Justification

Hypothesis that Web 2.0 technologies can promote:

- Collaboration
- Information exchange
- Global networking among scientists (peer-to-peer)
- Scientific discovery and innovation



BACKGROUND

Motivation/Justification (cont'd.)

We believed that scientific researchers would want to collaborate in a different manner than that provided by the typical social network such as Facebook, LinkedIn, Second Life or Twitter

We also wanted the system to support a broad range of both published and grey information types such as technical reports, theses, research notes, research papers in progress

BACKGROUND

Primary Goal

Speed the diffusion of scientific knowledge by enabling improved web 2.0 communications among scientific and research communities.

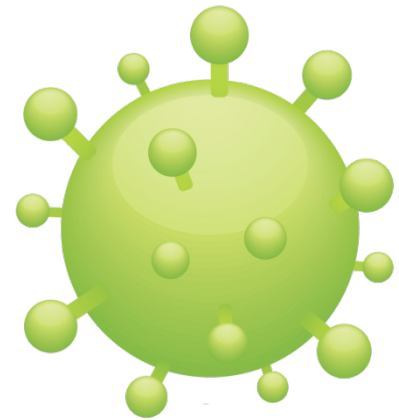
- Ease implementation of peer-to-peer communications
- Enable informal content creation of both comments and discussion
- Create formal published and grey literature
- Provide mechanisms to access, import, share, view, and cite other published and grey literature



PHASE I

Other Potential Benefits

- Facilitate retrieval of scientific and technical information by librarians and other information professionals
- Apply concept to traditional government research agencies, universities, pharmaceutical companies, and all organizations involved in scientific research



PHASE I

User/Subject Matter Expert Input Sought

- Interviewed hand-selected Focus Group
- Identified larger group to provide periodic feedback



PHASE I

Major Focus Areas

During 3 years of research:

- Determined high-level requirements for system
 - Simplicity and ease of use
 - Information security
- Conducted survey of commercial off-the-shelf/open source systems
- Produced prototype for evaluation

PHASE I

Prototype Development

- Noted considerable change in landscape of peer-to-peer collaboration between Phase I and Phase II surveys
- Determined significant number of shareware or open source products were highly customizable and would meet many of the project requirements out-of-the-box

PHASE II

Technology

- **Open Access Standards** (e.g., Crossref, bioRxiv, etc.) Research and development of standards and interoperable systems for building a system to enable self-organizing groups, where (library) users can scientifically use research information web-based communities around scientific topics of interest to those groups

PHASE II

Beta

- **“Science-Forums.net”**: The name given the website and system by the Project Team



Science-Forums.net

PHASE II



***Be sure to Tweet Comments
or Questions:***

@L_Vowell

@LynnJD

#GL13ScienceForums

#GL13conf

[Home](#)

[Welcome / Dev News](#)

[About](#)

[The Idea/Project Plan](#)

Forums

[Invite](#)

[Include Colleagues](#)

[Support](#)

[FAQs/Contact Info](#)

Welcome: Building forums for scientific discovery

Science-Forums.net enables scientists and researchers to establish an online community around a specialized topic area to foster enhanced communication among colleagues.

1

Step 1

CREATE A PROFILE

2

Step 2

CREATE A FORUM

3

Step 3

INVITE COLLEAGUES

You'll get a simple screen to create a Login ID for accessing the system and starting your Profile. We'll email you a password, and you're ready to create a Profile. It's easy and takes seconds.

Step 1 complete! (Currently logged in)



Enabling scientists to share information about their work in a pre-publishing environment can prevent overlap and reveal opportunities for collaboration and problem solving. Removing organizational and geographical boundaries, members within each forum can leverage the research, reviews, and discoveries of others in the group.

How to Get Started



Announcements / Team Blog

Welcome to Science-Forums.net Beta
Development site, dedicated to advancing science through sharing knowledge.

We are pleased to invite you to peruse the site, start a Forum on your topic of interest, and give us feedback.

Would you be interested in seeing a search of DOE Holdings in addition to being able to search one or all Forums?



[Home](#)

[Welcome / Dev News](#)

[About](#)

[The Idea / Project Plan](#)

[Forums](#)

[Create / Learn More](#)

[Invite](#)

[Support](#)

[FAQs / Contact Info](#)

Forums

Search for a forum by name

Filter by Subject Category

✓ <none>

Agriculture & Food

Applied Science & Technologies

Astronomy & Space

Biology & Nature

Chemistry and Chemicals

Computers, Communication & Mathematics

Earth & Ocean Sciences

Energy & Energy Conservation

Environment & Environmental Quality

Health & Medicine

Natural Resources & Conservation

Physics

Science Education

Create New Forum

Create a new Forum to collaborate with other specialists in your subject area. It's easy. It's free. Explore the potential.

[Create your own Forum](#)



Home

Welcome / Dev News

Library

Posts/Discussions

Join Discussion

Calendar

Add Events

Members

Invite Colleagues

All Forums

Create / Learn More

#GL13ScienceForums > Members > Invite Colleagues

Start Searching...

All Forums ▼

Members: Invite Colleagues

Email addresses or usernames:

DominicFarace@textrelease.com; joachnm.schopfel@gmail.com;
conference@textrelease.com; coppocke@comcast.net; debbie.odell@tds.net;
vowell@osti.gov

Enter up to 50 email addresses or usernames. Separate multiple addresses by commas or new lines. Each person will receive an invitation message from you.

You can also [import your contacts from GMail, Yahoo!, Lycos, AOL, Hotmail and many more.](#)

Personal message:

Dear Dominic:

To finalize slides for GL13, I have created this BETA forum and invite you to join. Your participation here will be welcome as, for one, I have entered a reference to your [Gray Literature in Library and Information Studies](#) in the

Optional. Enter a message which will become part of the invitation email.

Calendar

November						
				T	F	S
						1
2	3	4	5	6	7	8
9	10	11	12	13	14	15
16	17	18	19	20	21	22
23	24	25	26	27	28	29
30	31					

Content Updates

This group offers an [RSS feed](#). Or subscribe to these personalized, sitewide feeds:

This Forum: [RSS](#)

All My Unread: [RSS](#) or [Page View](#)



Home

Welcome / Dev News

Library

Build Repository

Posts/Discussions

Join Discussion

Calendar

Add Events

Members

Invite Colleagues

All Forums

Create / Learn More

#GL13ScienceForums > Library

Start Searching...

All Forums ▼

Library

Search Library

Add to Library

You can upload documents or add references to publications that can be shared with the group, commented on, and discussed.

Already got references as DOIs or packaged up in BibTex or EndNote? No problem. You can import directly from those formats.

Document Properties:

Author

(dc:contributor)

Dominic J. Farace,

Publisher

(dc:publisher)

De Gruyter

ISBN-13

(dc:identifier)

9783598117930

Pre-filled
per ISBN



Home

Welcome / Dev News

Library

Build Repository

Posts/Discussions

Join Discussion

Calendar

Add Events

Members

Invite Colleagues

All Forums

Create / Learn More

#GL13ScienceForums >

Start Searching...

All Forums ▼

#GL13ScienceForums

Exploring options/benefits for tweeting #GL13ScienceForums at the GL13, The Grey Circuit: From Social Networking to Wealth Creation, <http://www.textrelease.com/gl13abstracts/openingsession.html>

Most Recently Added

Towards a Prague Definition of Grey Literature

The most common definition of grey literature, the so-called 'Luxembourg definition', was discussed and approved during the 3rd International Conference on Grey Literature in 1997.

LIBRARY ENTRY

10/26/11 10:04 PM

[READ MORE »](#)

GL13 Conference, Dec 5-6, 2011

12/04/11 07:00 pm

GL13 Conference, The Grey Circuit: From Social Networking to Wealth Creation

CALENDAR ENTRY

10/26/11 10:04 PM

[READ MORE »](#)

Tweets about Tweeting

RT @schopfel RT @Klortho : What happens when you tweet about a paper in an institutional repository, #openaccess

<http://t.co/B8lUoZgR>

Melissa Terras' Blog <http://melissaterras.blogspot.com>

POST ENTRY

10/26/11 09:44 PM

[READ MORE »](#)

Calendar

October							»
S	M	T	W	T	F	S	
							1
2	3	4	5	6	7	8	
9	10	11	12	13	14	15	
16	17	18	19	20	21	22	
23	24	25	26	27	28	29	
30	31						

Content Updates

This group offers an [RSS feed](#). Or subscribe to these personalized, sitewide feeds:

This Forum: [RSS](#)

All My Unread: [RSS](#) or [Page View](#)

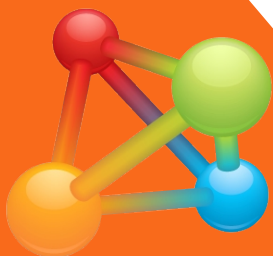
All My Forums: [RSS](#) or [Page View](#)

**Twitter Comments
on Questions:**



ScienceForums
#GL13conf

Science-Forums.net
COMMUNITIES FOR SCIENCE COLLEAGUES



Lance Vowell

Program Manager

Contractor to DOE/OSTI
Information International
Associates (IIa)

(865) 576-2087

VowellL@osti.gov



Lynn Davis

Program Liaison, MLS

DOE Office of Scientific and
Technical Information (OSTI)

(865) 241-6435

DavisL@osti.gov

