

The Impact of Grey Literature in Advancing Global Karst Research

An Information Needs Assessment
for a Globally Distributed
Interdisciplinary Community



What is Karst?

Caves topography **water** maps

geology environment

aquifers erosion

limestone RAIN

dissolution geography

bedrock Sinkholes **acids**

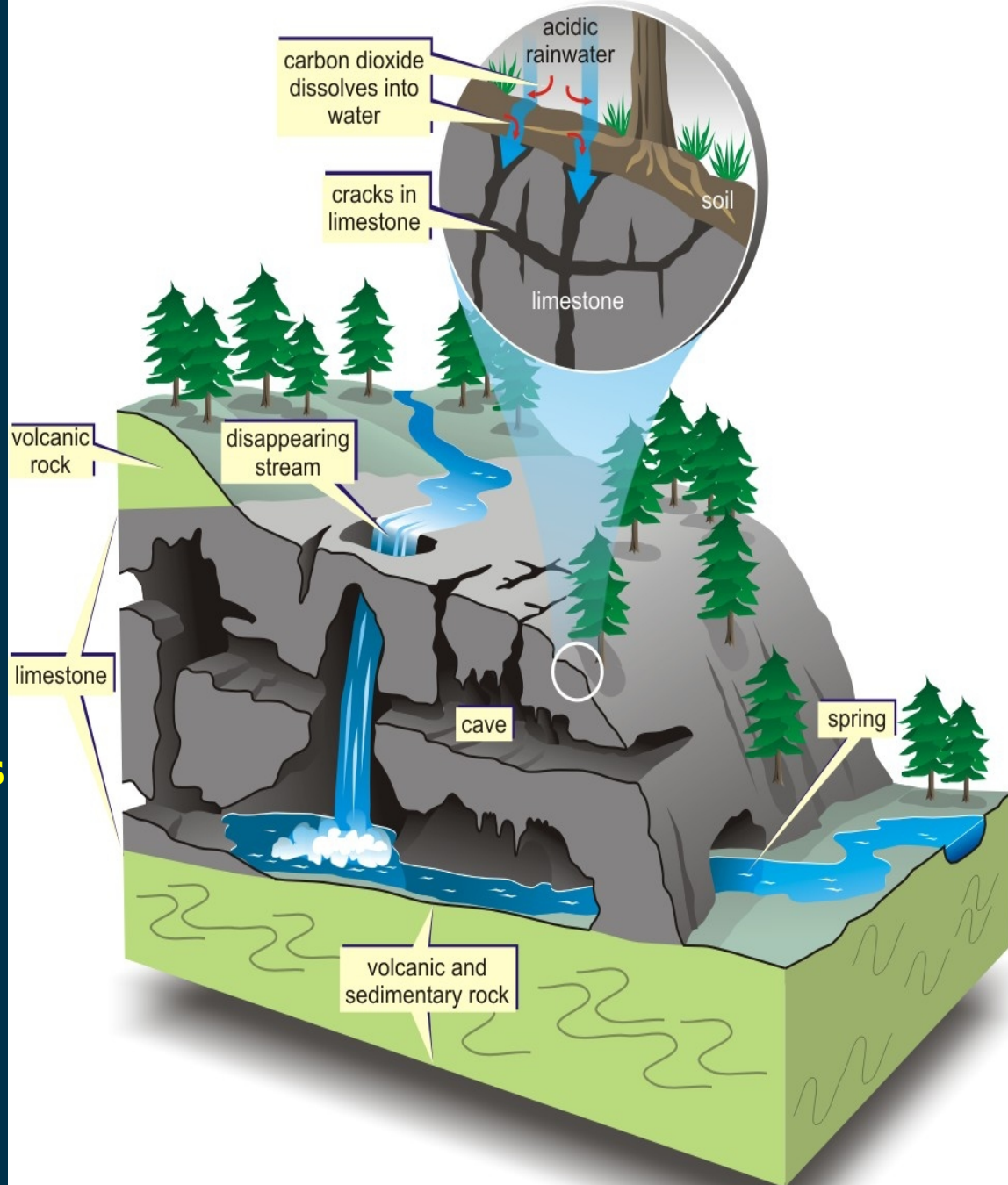
groundwater Carbonate

rock hydrology resource

DOLOMITE

contamination Terrain

subsurface **human**



From Natural Resources Canada

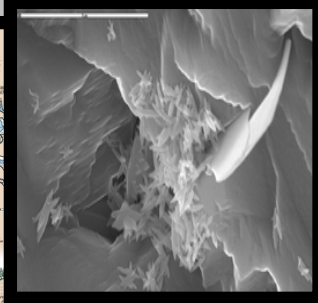
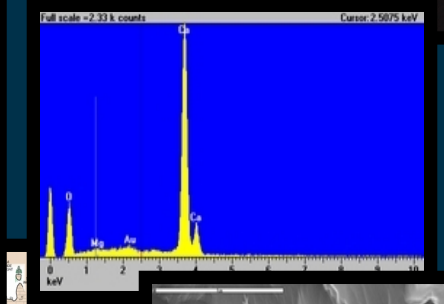
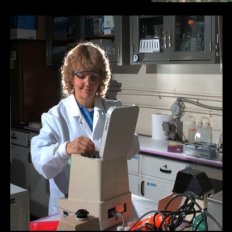
Resource Deposit

Content + Indices/
Databases

The Karst Information Portal (KIP) will link the global karst research community with an open-access and integrated information resource designed to advance karst, cave and aquifer studies.

Search Interface +
Data Management
Tools

Web Service Interface



Sample ID	Al	As	B	Ba	Cr	Cu	F	Fe		
(mg/L)										
GO-1	<0.1	<0.002	<0.025	0.16	<0.01	<0.02	0.23	<0.02	<0.02	
GO-2	<0.1	<0.002	<0.025	0.15	<0.01	<0.02	0.26	<0.02	<0.02	
<div>Service Interface</div>										<0.02
										<0.02
										<0.02
										<0.02
										<0.02
										<0.02
										<0.02
										<0.02
GO-8	<0.1	<0.002	<0.025	0.19	<0.01	<0.02	0.23	<0.02	<0.02	



Information Needs Assessment

*Conducted to guide development
of the Karst Information Portal ...*

Purpose

- Define information content needs
- Assess role of grey information sources
- Define desired web services

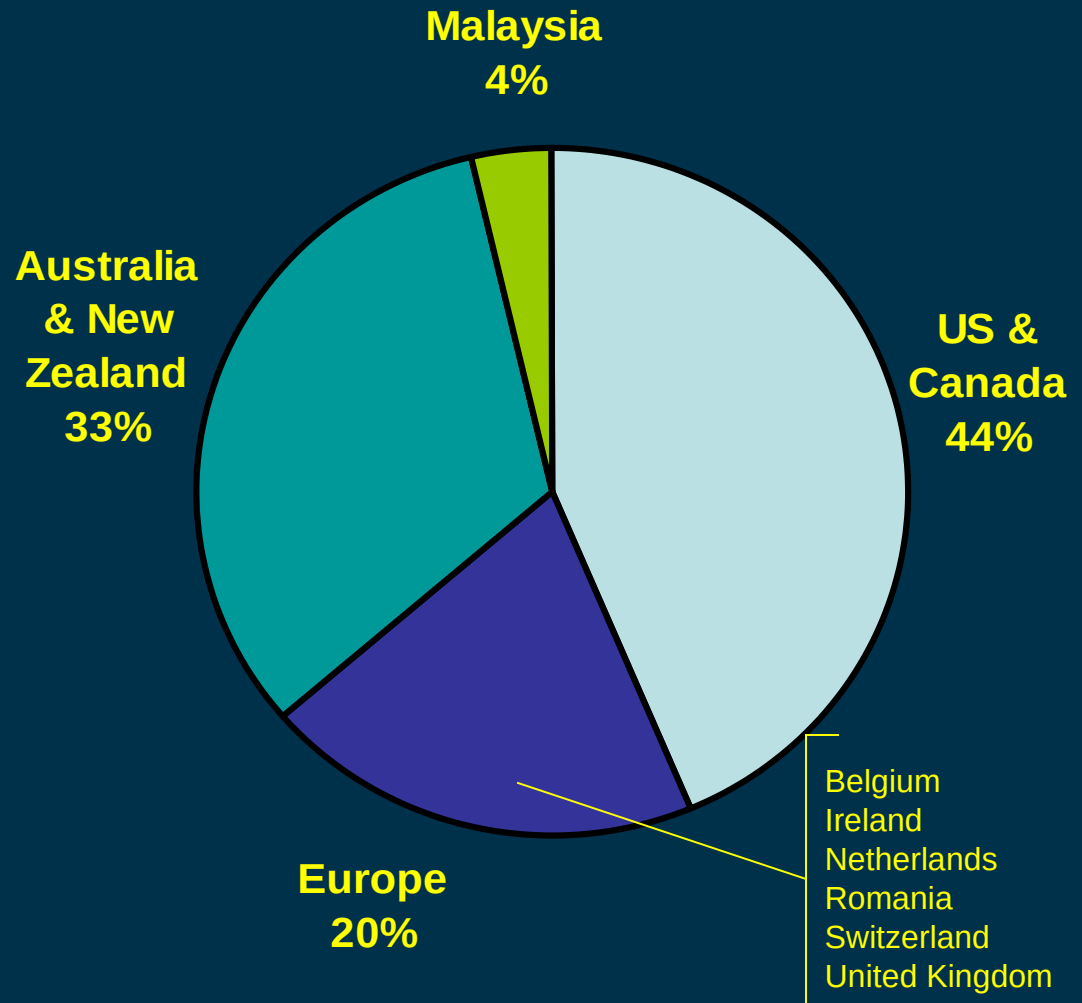
Method

- “Snowball” sampling (11 initial targets)
- Web-based
- Piloted January 2006
- Administered August-September 2006

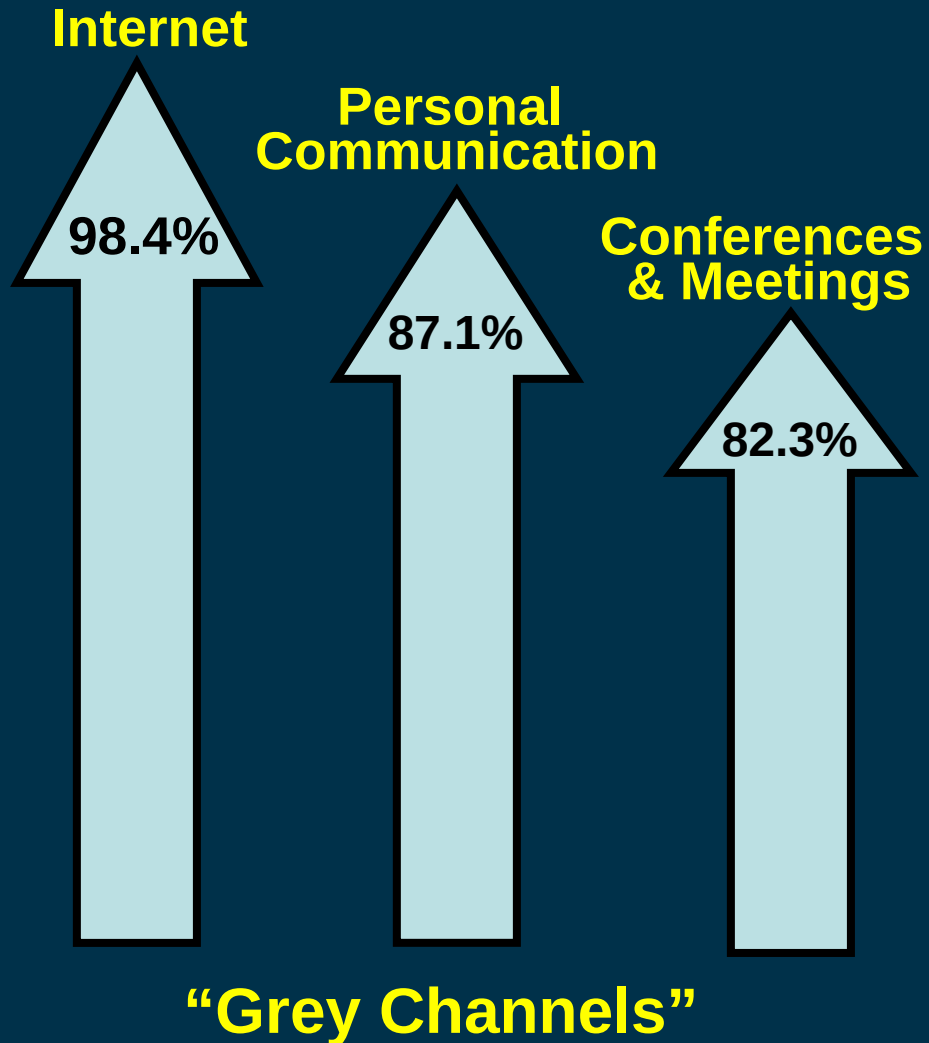
Respondents

Occupation/Affiliation	No.
Researcher	29
Caver	13
Resource Manager	6
College Student	6
Government Agency	4
Industry Researcher / Consultant	3
Museum / Institute	2
Librarian / Information Professional	2
Activist	1
TOTAL	66

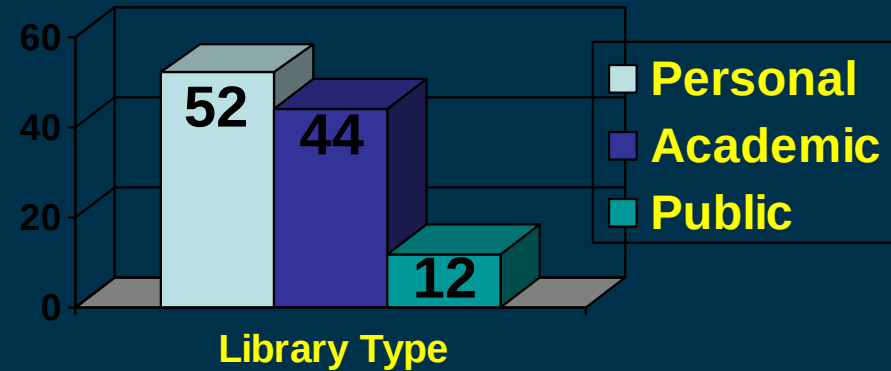
Geographic Distribution



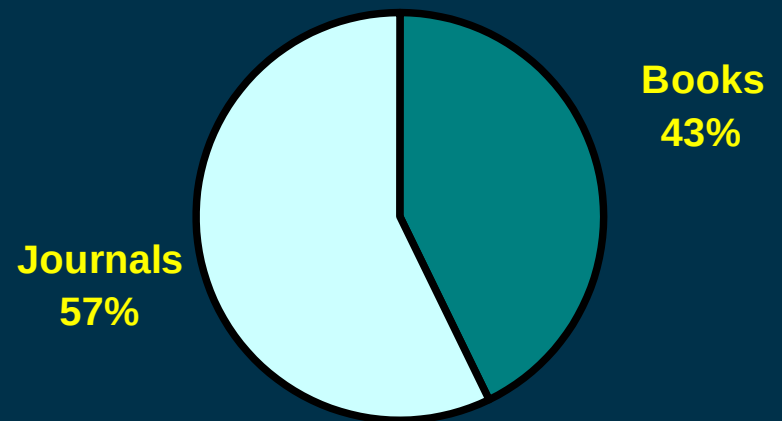
Locating Information



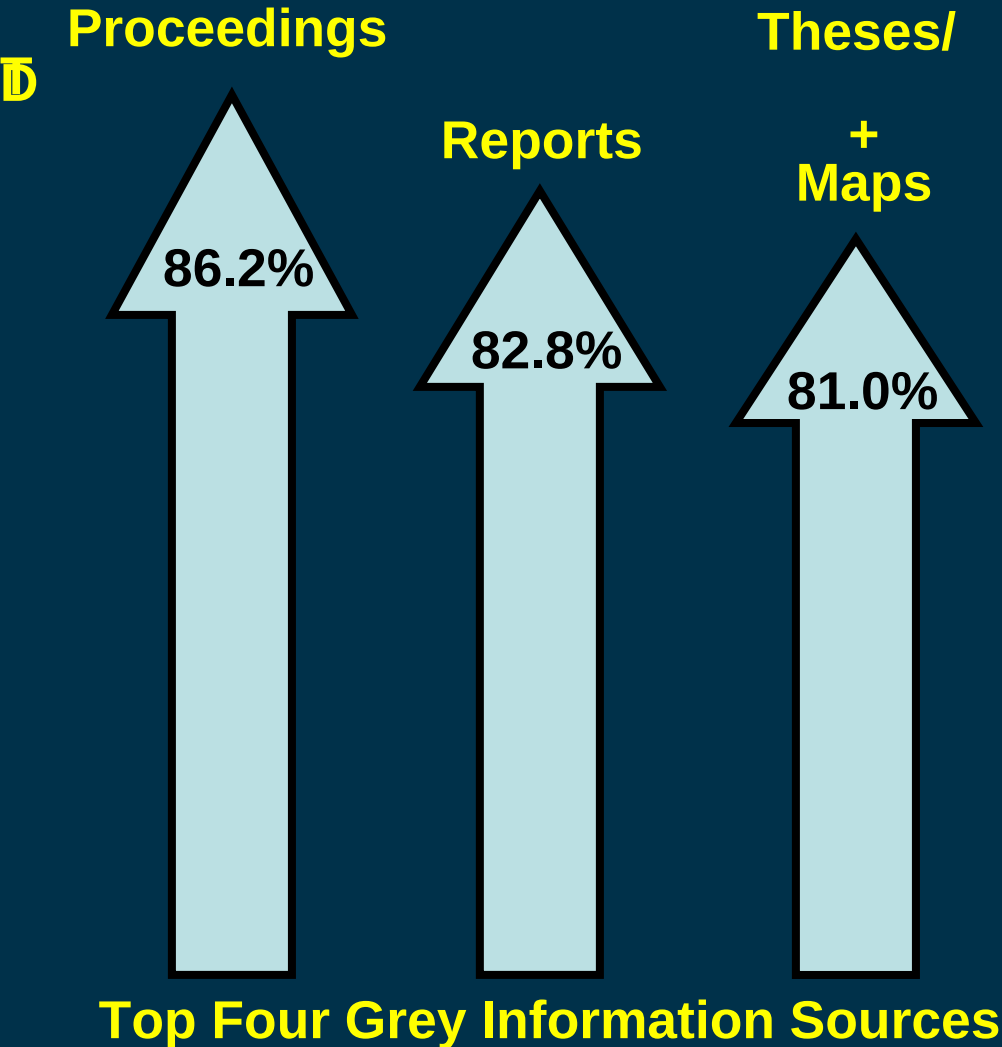
Respondent Library Use



Traditional Channels



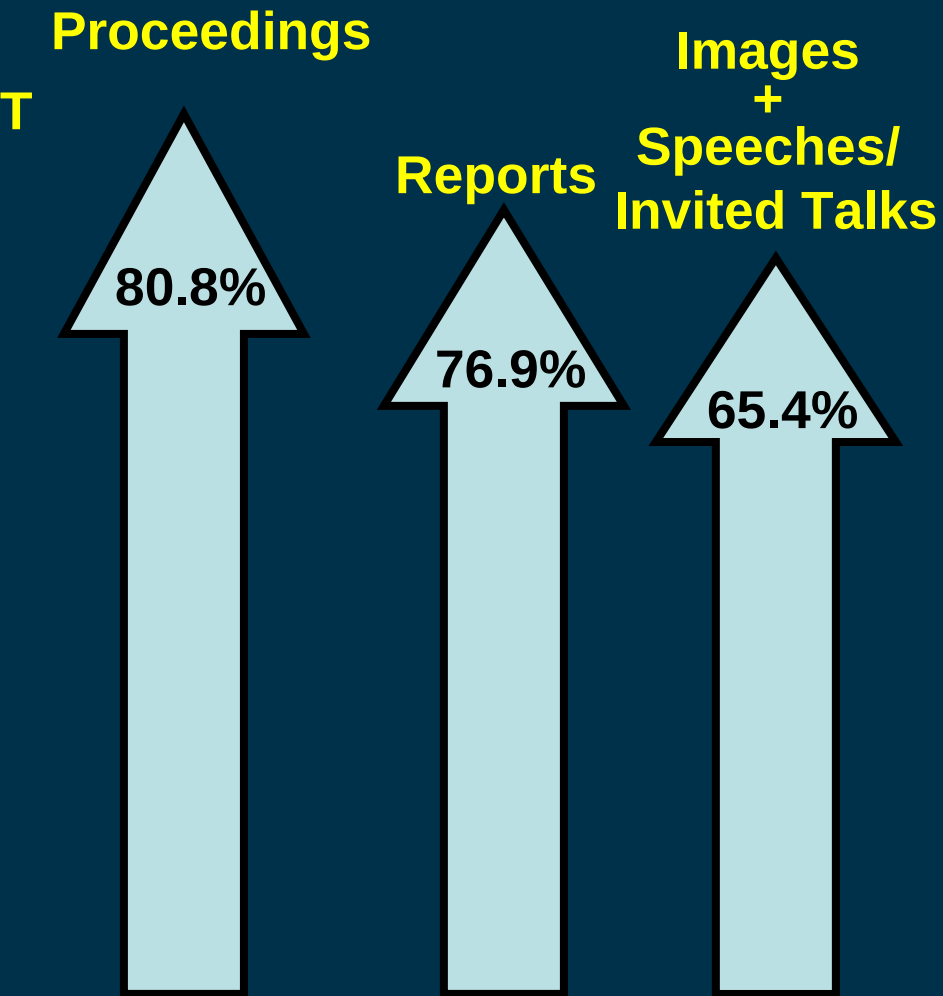
96.6% Use Grey Information



To the statement,
“Grey literature is a
very important source
of information to karst
researchers ...”

70.9 % agree

89.3% Produce Grey Information



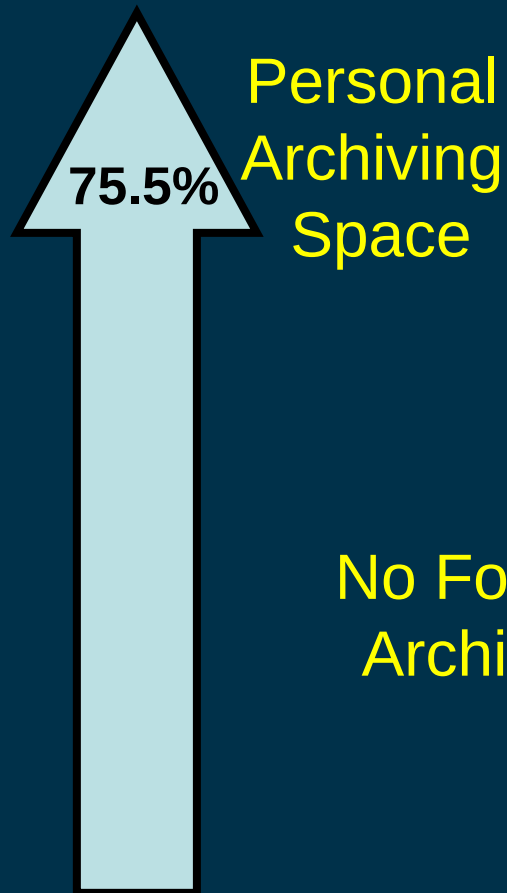
Most Commonly Produced Grey Information Types

Information Type	%
Conference Proceedings/Papers	80.8
Trip & Cave Reports	76.9
Speeches or Invited Talks	65.4
Images	65.4
Maps	61.5
Research Proposals	57.7
Theses/Dissertations	53.8
Association/Organization Publications	48.1
Newsletters	46.2
Cave Entrance Databases	44.2
Grant Applications	44.2

Top Four Grey Information Sources

Preservation & Access

Where do you archive the grey information that you produce?



No Formal Archiving



Most Difficult Grey Information Types to Access

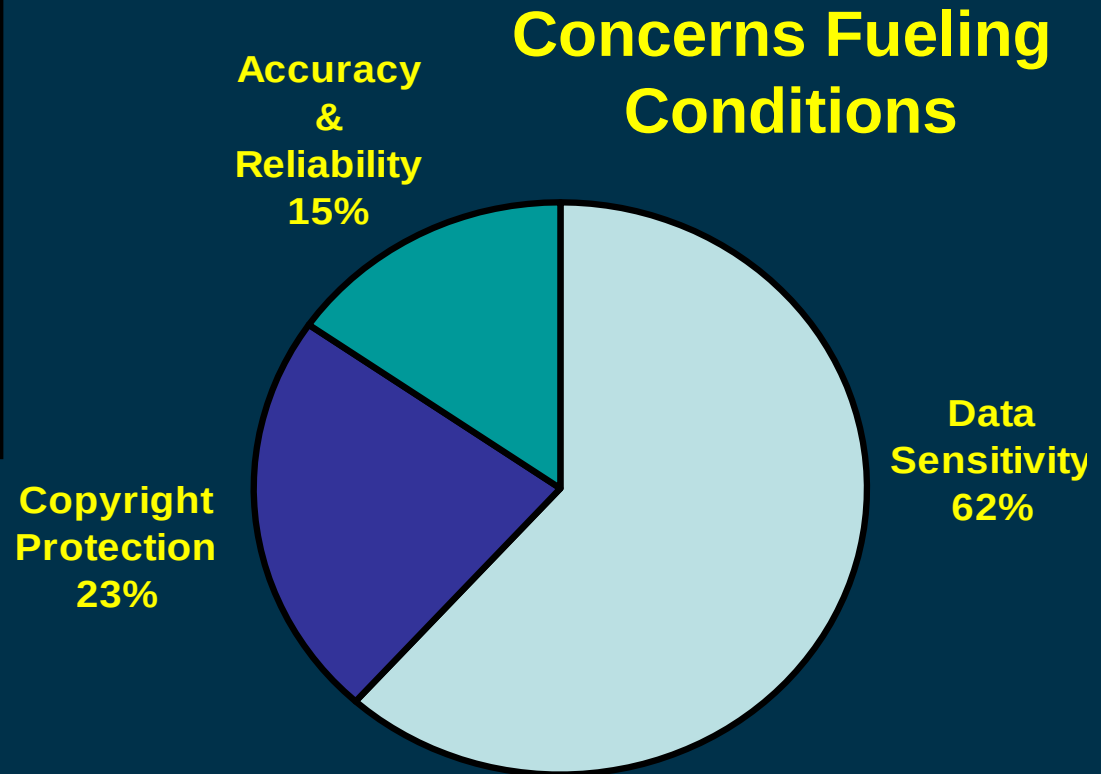
Information Type	%
Theses/Dissertations	51.0
Conference Proceedings/Papers	46.9
Governmental Reports	42.9
Non-Governmental Reports	40.8
Cave Entrance Databases	36.7
Trip & Cave Reports	32.7
Foreign-Language Translations	28.6
Association/Organization Publications	28.6
Maps	26.5
Pre-1923 Karst Papers	26.5

The Karst Information Portal (KIP) As Grey Literature Repository

Would you use the
KIP as a personal
digital repository?

Yes 43.6 %

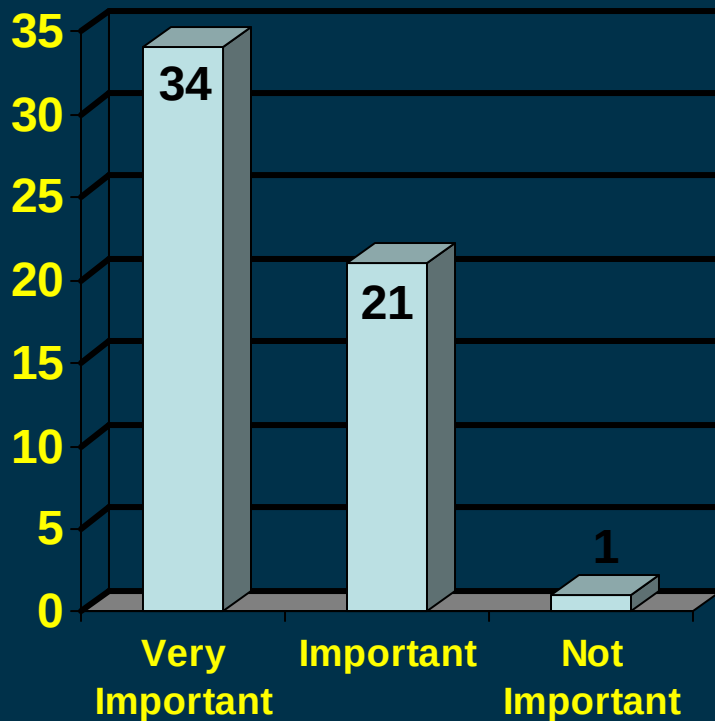
No 20.0%



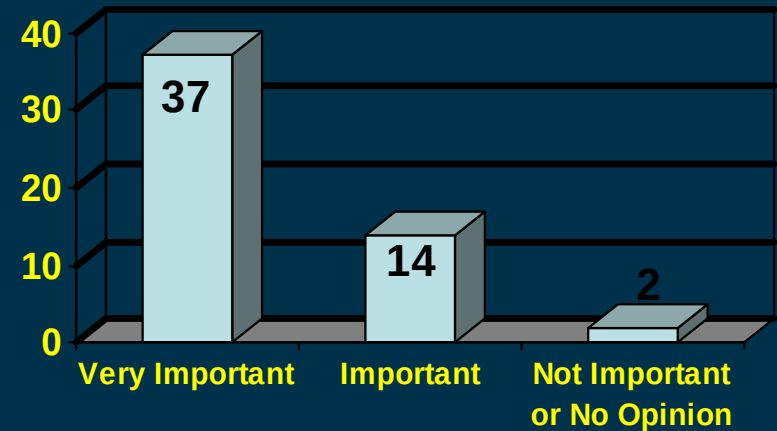
Respondents expressing conditions ... 32.7%

Context for Grey Literature in the KIP Project

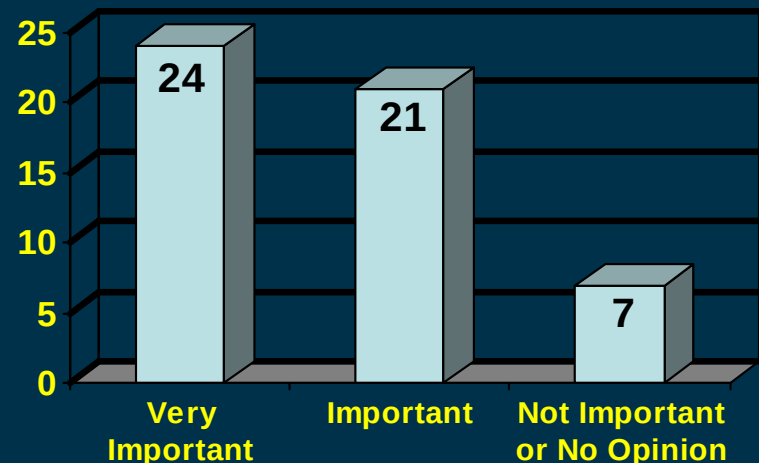
Include Grey Content?



Digitize Key Grey Resources?



Evaluate Grey Resources?



Thank You!

Todd Chavez

Director of Collection Analysis, USF Library System

tchavez@lib.usf.edu

Dr. Anna Perrault

Professor, USF School of Library & Information Science

perrault@cas.usf.edu

Courtney Crummett

Fellow, National Library of Medicine

courtcrum@gmail.com

Pete Reehling

GIS Librarian, USF Library System

reehling@lib.usf.edu

Lechuguilla Cave 3-D Profile

Toporobot Computer Assisted Cave Cartography