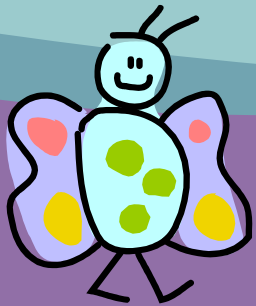


Awareness and empowerment in document production and distribution as a “must” for open access: experiences from the “Nancy style” to guarantee quality



Paola De Castro*, Sandra Salinetti*, Marcus Banks°

* *Publishing Activities, Istituto Superiore di Sanità, Rome (Italy)*

° *New York University Medical Center, New York (USA)*



Background



LONG TRADITION

from

uncertainty and confusion in the last century

to

new certainties and appraisal in the open

GL as a fundamental primary source of information

HENCE

the awareness to empower authors and issuing organization to guarantee quality in both production and diffusion of GL.

HOW?

Guidelines for the production of scientific and technical reports



Goal



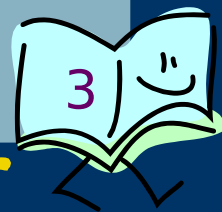
to update the *Guidelines*

- *taking into consideration the rapid changes in the information market*



to promote the adoption of the *Guidelines*

- *involving GL authors and institutions*
- *making translations available in different languages*
- *establishing useful contacts with key persons in the information arena*



Actions developed



- Analysis of GL in the changing context
- Reflections on the development of the “Nancy style”
- Comparison between “Nancy style” and ANSI/NISO Z39.18
- Promotion of the “Nancy style”



to create major awareness on quality issues in GL creators, users, and policy makers



Analysis of GL in the changing context (1)

Upsetting hierarchies of information sources

PRINT ONLY ERA

Valid
distinction

GREY LITERATURE

(unique content, difficult retrieval)

VS

PEER-REVIEWED JOURNALS

(regularity and reliability)

NOW

No distinction

Theoretically **ALL** scholarly content could be posted online according to the principle of “open access”.

BUT Scientists still prefer formally peer-reviewed content.



Analysis of GL in the changing context (2)

Why is it important to raise the profile of GL?

Because grey literature is still useful...

IN FACT



GL is more likely to:

- report negative results
- discuss studies that concluded prematurely
- offer a much more comprehensive picture of the state of knowledge for any topic



Analysis of GL in the changing context (3)

How can the profile of GL be raised?

INTERNAL advance among GL producers

HOW? adhering to well-developed production standards:
in Europe NANCY STYLE
in USA ANSI/NISO standard Z39.18-2005

EXTERNAL advance in the information landscape

HOW? enhancing public awareness of GL



Analysis of GL in the changing context (4)

Examples of changing
policies

Currently pending acts in
2006

CANADA “Draft Policy on Access to CIHR-funded Research Outputs”

Grant recipients should provide online

access to:

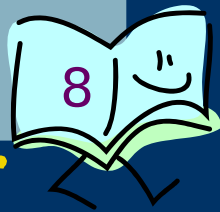
- peer-reviewed articles (*no longer than six months after publication*)
- “research materials” and “research data” (*different examples of “grey content”*)

USA “Federal Research Public Access Act of 2006”

Federal grant recipients should provide online access

ONLY to:

- peer-reviewed articles (*no longer than six months after publication*)



Analysis of GL in the changing context (5)

Open Data Movement: open data in science

To ensure maximum access to several types of data:

- scientific data (*deemed to belong to the commons*)
- infrastructural data (*such as that provided by geographic information systems*)
- factual data (*not copyrightable*)

GL producers and users should become strong proponents of the open data movement



Analysis of GL in the changing context (6)

Example s

OPEN DATA FOUNDATION

Different communities can work together on technology standards and software tools which will facilitate visibility and re-use of data.

UNIVERSITY OF CAMBRIDGE

Murray-Rust is one of the developers of the concept of:



DATUMENT

Scientific paper enriched with data elements that can only be accessed and interpreted electronically integrating traditionally grey and white content.



Reflections on the development of the “Nancy style” (1)



During the creation of the *Guidelines*,
MAJOR POINTS of discussion
regarded:

- electronic grey literature
- adoption strategy

to reach INTERNATIONAL CONSENSUS
(*even within a small group of experts in a specific field*)



Reflections on the development of the “Nancy style” (2)



Electronic grey literature

NANCY STYLE is mostly paper

oriented
(editorial consistency and ethical considerations of traditional documents apply also to digital publications)

No metadata schema was then provided since no formula would satisfy all requirements.

YET

since GL is now being published electronically
METADATA ARE REQUIRED

Will this Round table produce a new step towards a SIMPLE metadata schema?



Reflections on the development of the “Nancy style” (3)



Adoption strategy

AT FIRST a formal approval was asked to all organizations wishing to adopt NANCY STYLE.
Encouragement never lacked.

LESS FORMAL SUPPORT was soon granted by all institutions involved in their

BUT

Consensus was given only by few.

THEREFORE the adoption strategy should be revised:

VOLUNTARY APPROACH followed by an official endorsement
(once the organization can show that the Guidelines are actually followed)



Comparison “Nancy style” vs ANSI/NISO Z39.18 (1)



To update the *Guidelines*, all useful documents were studied.

In
particular

ANSI/NISO Z39.18-2005

Scientific and Technical Reports – Preparation, Presentation, and Preservation

(released in 2005)



pointing out

- General considerations
- Content considerations
- Technical recommendations



Comparison “Nancy style” vs ANSI/NISO Z39.18 (2)



General considerations



DOCUMENT TYPE

NANCY STYLE represents
guidelines
(*general principles as outline of policy or conduct*)

ANSI/NISO Z39.18 is a proper standard
(*subject to approval process*)



PAPER VS DIGITAL DOCUMENT MEDIUM

NANCY STYLE is mostly paper
oriented

ANSI/NISO Z39.18 refers mainly to metadata,
digital formats, maintenance and preservation, etc.



Comparison “Nancy style” vs ANSI/NISO Z39.18 (3)



Content considerations

Document structure is basically the same.

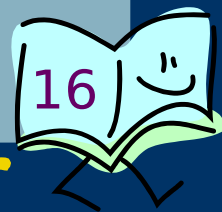
BUT

NANCY STYLE provides elements about:

- *ethical issues*
- *instructions to authors*
- *revision*
- *reference style*

ANSI/NISO Z39.18 gives indication on:

- *report documentation page*
- *distribution list*
- *glossary (although not part of the standard)*
- *executive abstract*



Comparison “Nancy style” vs ANSI/NISO Z39.18 (4)



Technical recommendations

NANCY STYLE (*guidelines*)



contains only essential technical considerations.

ANSI/NISO Z39.18 (*standard*)



gives also indications on:

- Print-specific/non-print-specific recommendations
- Format



Promotion of the “Nancy style” (1)

When “Nancy style” was released, its promotion was made through:

ACTIONS within the GL community

- announcements in different forums
- creation of a logo for GLISC
- development of GLISC site



www.glisc.info

- translations in French and Italian
- organization of training courses

ACTIONS outside the GL community...



Promotion of the “Nancy style” (2)

ACTIONS outside the GL community

Spread information about GL and standards for quality
production
in environments where little was known about it:

Within the world of scientific

Example

*ASE asked to write on GL for its Science Editors
Handbook
and in the journal European Science Editing.*

In scientific institutions in

Example

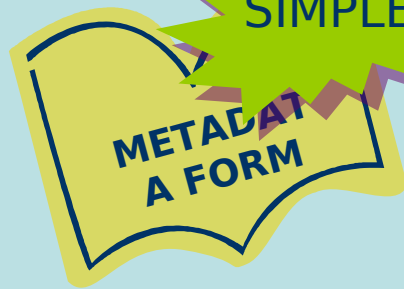
*ISS organizes training courses for inexperienced GL
authors
as the best way to reach publications of higher levels.*



Proposals for updating the “Nancy style”

Suggested additions

- Appendix on metadata (*Dublin Core and ANSI/NISO Z39.18 structure*)



descriptive (*bibliographic*)
administrative (*rights and software*)
structural (*hierarchical levels to display and navigate digital resources, etc.*)

- Subject index
to facilitate retrieval of specific items
 - More technical advice on digital format
with print-specific and non-print-specific indications
 - Facilitating reference
“To be cited as” followed by the correct citation

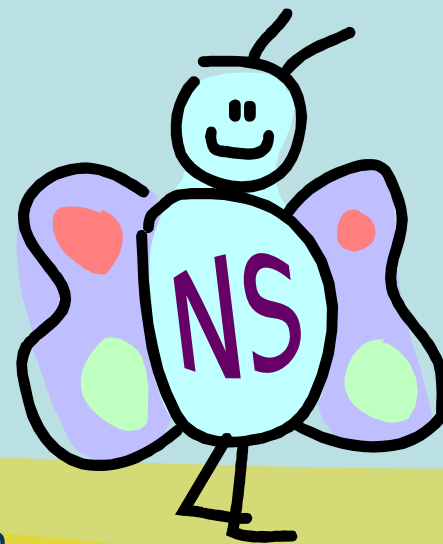


Final considerations

NANCY STYLE

- basic step to improve quality in the different stages of GL production
- useful suggested model rather than a model in itself

GL actors should promote its diffusion both **IN** and **OUT** the grey community.



Closing challenge



Most of the promotional efforts for NANCY STYLE have occurred in



EUROPE

GL8 meeting in New Orleans will discuss how to increase awareness of NANCY STYLE in



NORTH AMERICA

