

**The integration of  
GL documents  
with the research information system  
on occupation safety and health**

***Daniela Luzi***

*CNR – Istituto di Ricerche sulla Popolazione e le Politiche Sociali, Roma*

***Maria Castriotta***

*ISPESL – Dipartimento Documentazione, Informazione e Formazione, Roma*

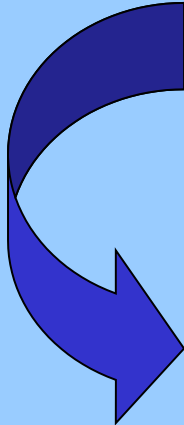
***Mariarosaria Manco, LINK s.r.l., Roma***

***Renza Mazzucco, LINK s.r.l.,***

## AIM OF THE COLLABORATION CNR-ISPEL

Analysis of the process describing the lifecycle of research projects on occupational safety and health in order to re-design the organisational model improving:

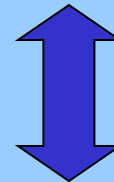
- communication flow
- updating of research projects information
- diffusion of research outcomes



Design and development of an information system



**Ris-Osh**



**Integration with the GL database**

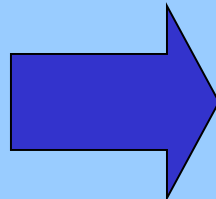
# Expected advantages:

## Organisational point of view:

- Improvement of the communication inter and intra Departments;
- Consistency and standardisation of project documentation (*Activity plan, Call for proposal*);
- Simplification of administrative procedures and shortening of time of information diffusion;
- Improvement of the process control and monitoring

## Scientific-institutional point of view:

- Improvement of the institutional visibility and prestige
- Scientific and economic evaluation of research activity
- Tool for planning future research activities
- Improvement of technological transfer through the diffusion of project outcomes



**GL documents**

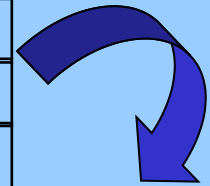
**RIS-OSH** is a Current  
Research Information System  
(CRIS)



Institutional repository (IR)



<b>Project description</b>
<i>Person</i>
<i>Org. unit</i>
<i>Project</i>
.....



Common aims:

- expand access to institutional generated information
- increase institutional visibility and prestige
- enhance the impact of research

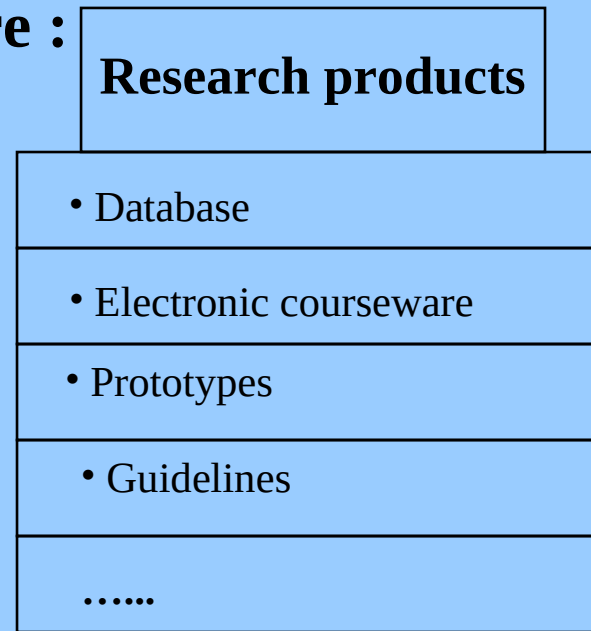
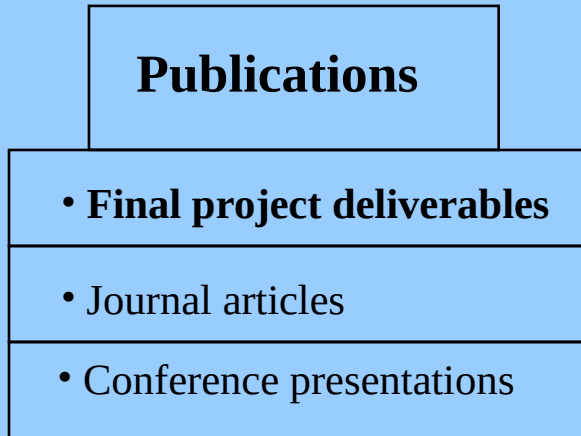
<b>Management and dissemination of digital materials</b>
E-print
Technical reports
Courseware materials
.....

**IRs' definition can be applied to CRISs:**

The information content is:

- institutionally generated
- cumulatively collected
- distributedly archived
- preserved for future use

# RIS-OSH provides information on GL, Digital materials, Conventional literature :





Annotations for the document upload form:

- Title**: points to the 'Titolo' field.
- Abstract**: points to the 'Abstract' field.
- Authors**: points to the 'Autori' field.
- Uploading of the document**: points to the 'Documento completo' field.
- Help**: points to a question mark icon in the bottom right corner.

Annotations for the product registration form:

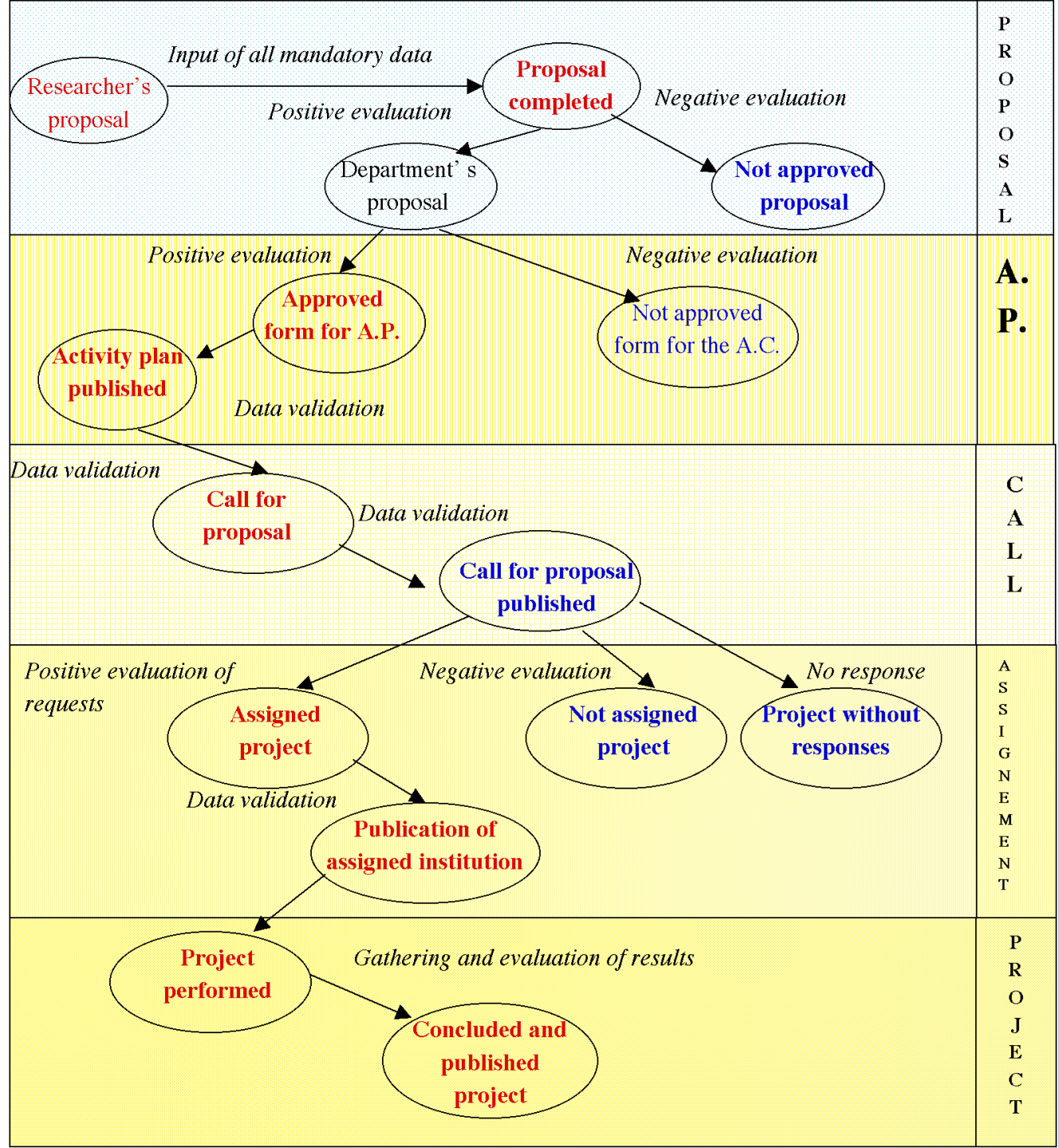
- Title**: points to the 'Titolo' field.
- description**: points to the 'Descrizione' field.
- URL**: points to the 'URL' field.

## RIS-OSH re-constructs the organisational model of a research project lifecycle by identifying :

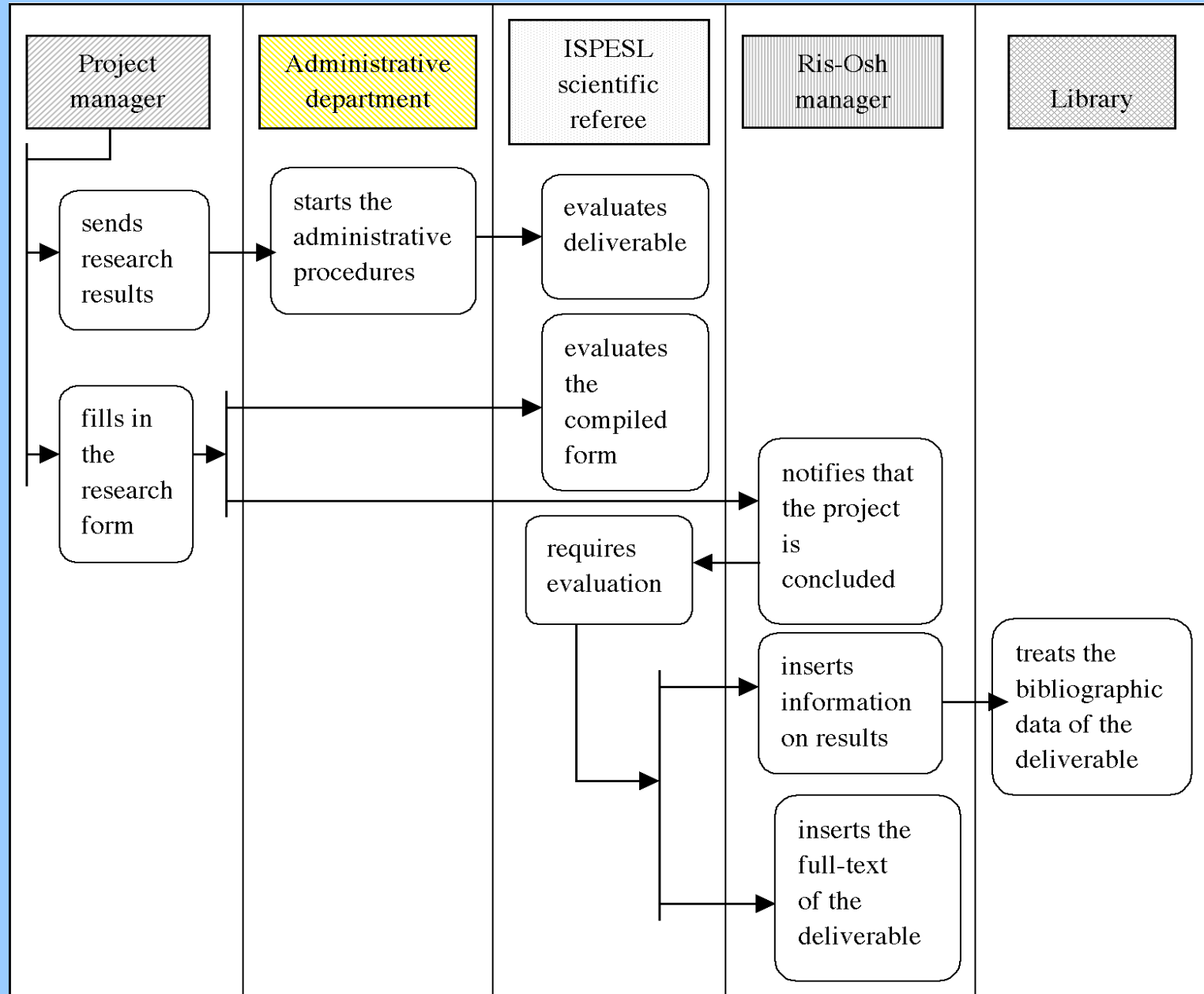
- “information producers”  **Distributed input of information**
- actors’ role and activities performed in the process:
  - submitter 
  - evaluator
  - data reviser
  - web publisher**Access authorisation**

- **Assess and enhance of the quality of information**
  - **digital materials’ bibliographic description**
  - **availability of the full-text**
- **Speed-up the updating of information**

# STATE DIAGRAM

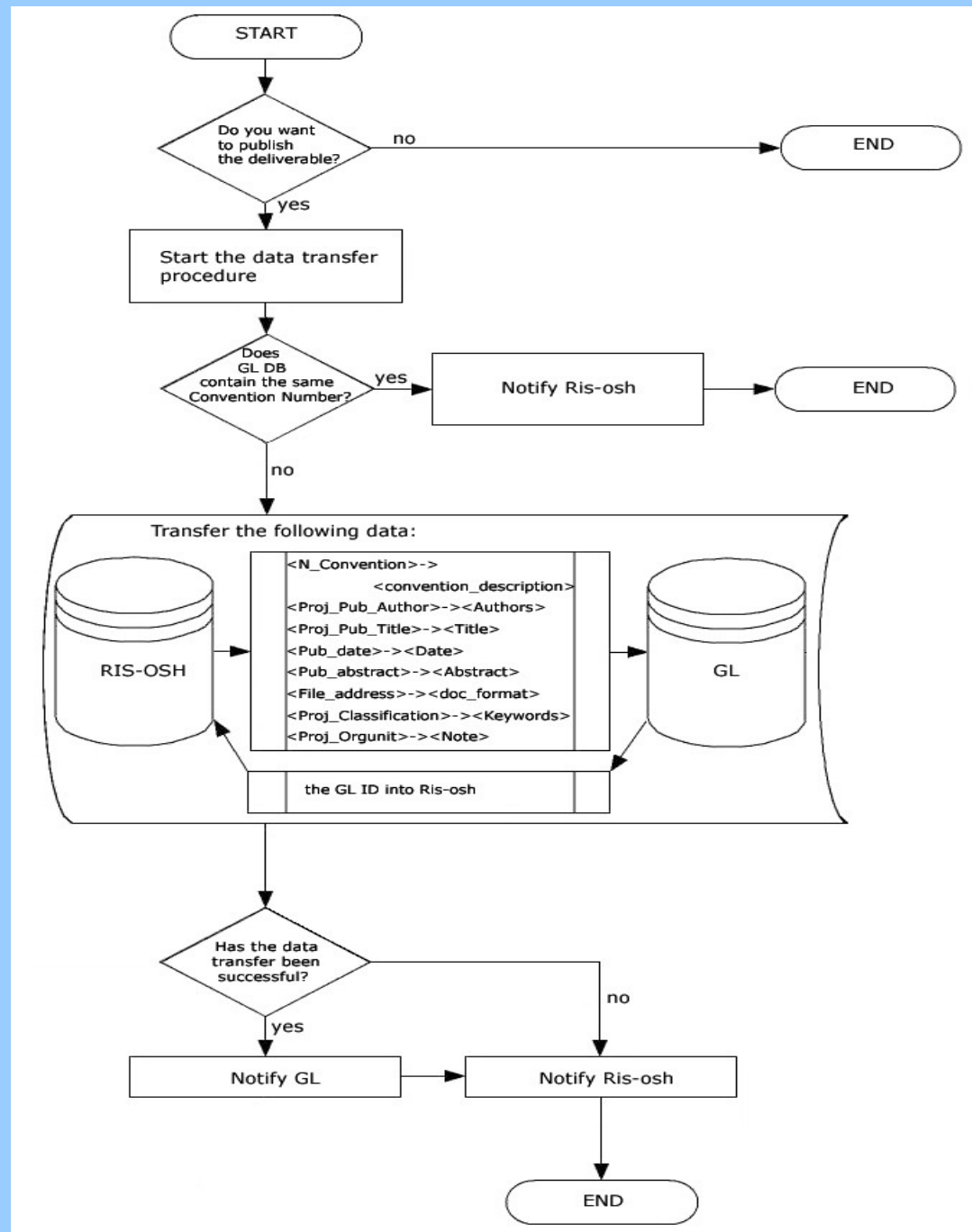


# The collaborative diffusion of results

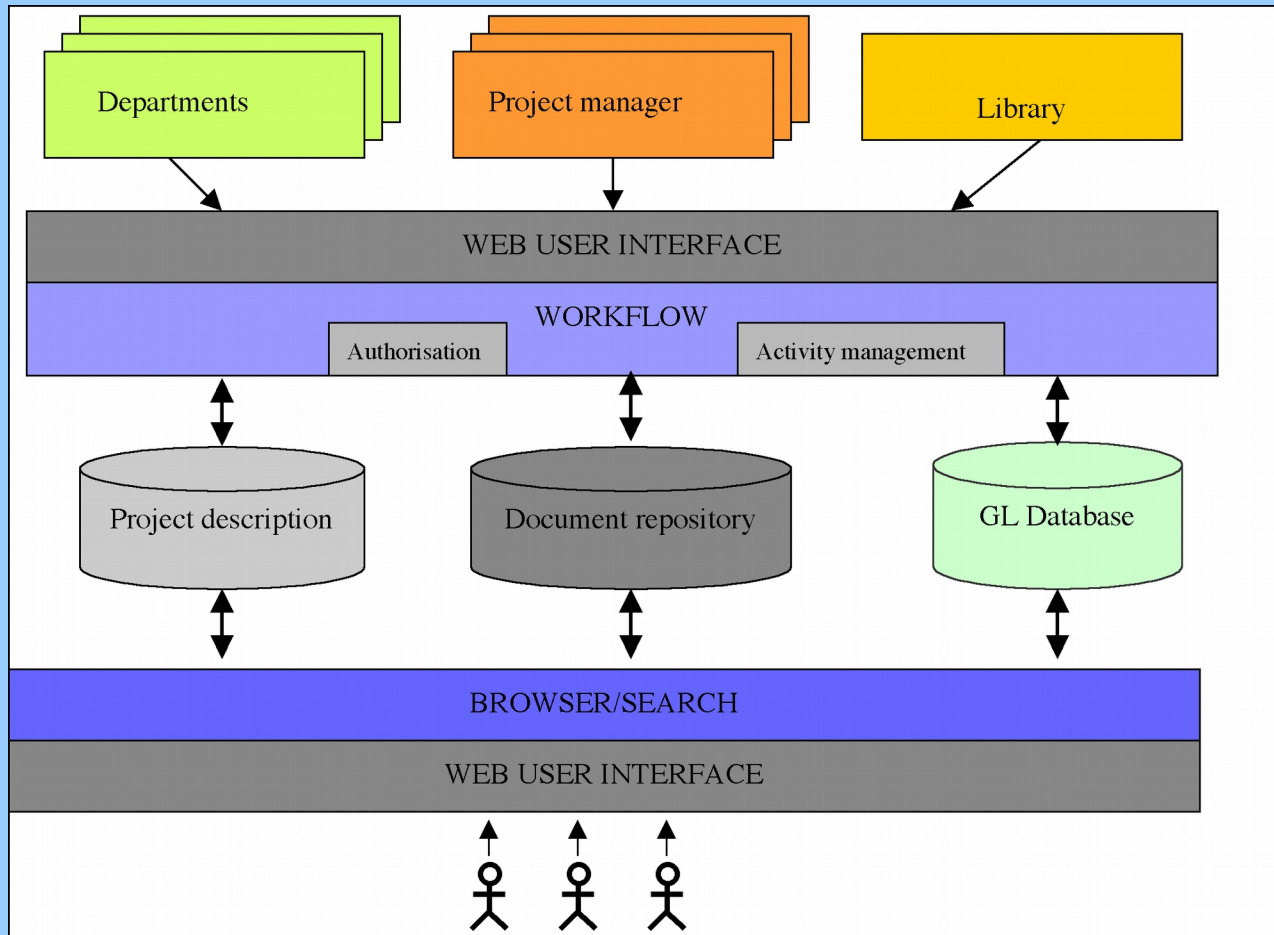




# The integration of RIS-OSH and GL database



# System architecture



# Conclusions

- Project descriptions from 1999-2004 soon available on web
- Testing of the procedures for the elaboration and publication of next year Activity Plan and related Call for proposal

## Achievements

- Organisational improvement of the production, collection, preservation and diffusion of institutionally generated information
- Quality of information
  - Project description
  - Availability of the full-text of deliverables
  - Description of projects outcomes

Integration  
with the GL  
Database

## Future work

Integration with other institutionally generated information